

Nutcracker Modern

Theme 1

G⁵

First system of guitar tablature for Theme 1, G⁵. The system consists of three measures. The first measure has a treble staff with a 4/4 time signature and a bass staff. The treble staff has a 5th fret barre, a 7th fret, and a 5th fret. The bass staff has a 3rd fret barre. The second measure has a treble staff with a 5th fret barre, a 7th fret, and a 5th fret. The bass staff has a 3rd fret barre. The third measure has a treble staff with a 7th fret, a 7th fret, a 7th fret, and a 5th fret. The bass staff has a 3rd fret barre. The system ends with a double bar line.

A⁵

D⁵

B⁵

E⁵

Second system of guitar tablature for Theme 1, A⁵, D⁵, B⁵, E⁵. The system consists of three measures. The first measure has a treble staff with a 5th fret barre, a 7th fret, and a 5th fret. The bass staff has a 3rd fret barre. The second measure has a treble staff with a 5th fret barre, a 7th fret, and a 5th fret. The bass staff has a 3rd fret barre. The third measure has a treble staff with a 7th fret, a 7th fret, a 7th fret, and a 5th fret. The bass staff has a 3rd fret barre. The system ends with a double bar line.

C

D

E

A[#]

B

Third system of guitar tablature for Theme 1, C, D, E, A[#], B. The system consists of two measures. The first measure has a treble staff with a 7th fret, a 9th fret, an 8th fret, and a 7th fret. The bass staff has a 3rd fret barre. The second measure has a treble staff with a 8th fret, a 7th fret, a 10th fret, and a 10th fret. The bass staff has a 3rd fret barre. The system ends with a double bar line.

Transcribed by Tapella

Theme 2

G⁵

7 7 7 7 5 5

3

7 7 7 7 5

3

A⁵ D⁵ B⁵ E⁵

7 7 7 7 5 7

8 10 8 7 10 8 7 10

10 12 10 13 12 10 12 12

C D E A[#] B

12 10 8 12 14 12 10 14

15 14 12 14 11 7 19

Bridge 1

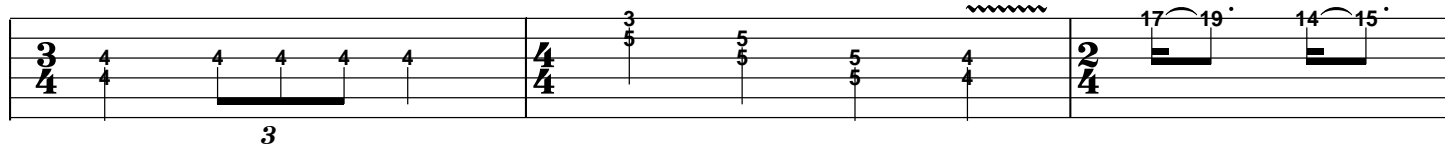
B⁵

C⁵

B⁵

D[#]

E



F[#]

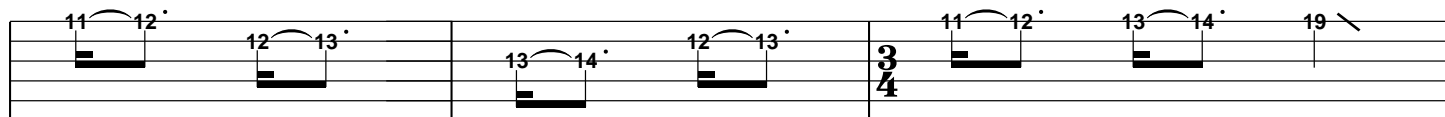
G

A

C

F[#]

B



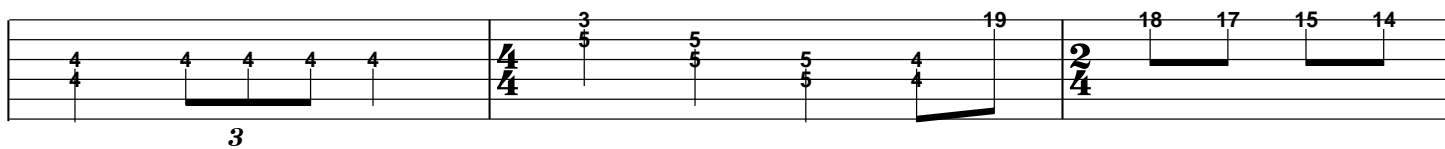
B⁵

C⁵

B⁵

D^{#5}

E⁵



G^{#5}

A⁵

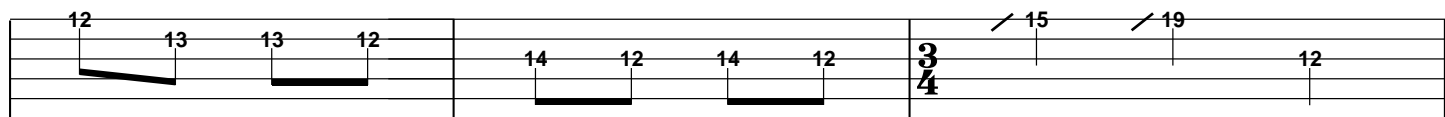
C⁵

D⁵

C⁵

B⁵

A⁵



Theme 3

G⁵

4/4

10	10	10	10	12	12	14	10	12	10	10	10	10	12	12
12	12	12	12	12	12	12	12	12	12	12	12	12	12	12

3 3

A⁵

D⁵

B⁵

E⁵

14	10	12	7	8	10	8	7	10	8	7	7	7	8	7	10	8	7	9	8
12	12	12	7	8	10	8	7	10	8	7	7	7	8	7	10	8	7	9	8

C

D

E

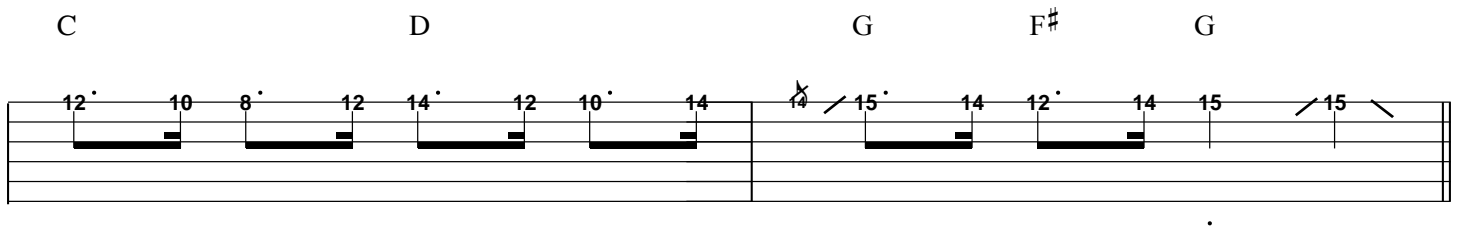
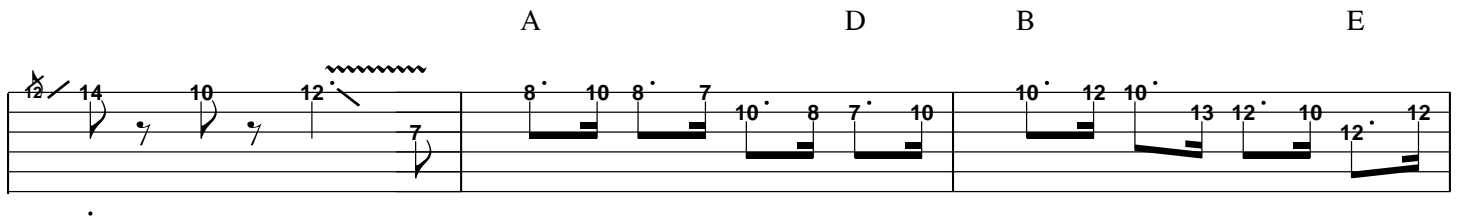
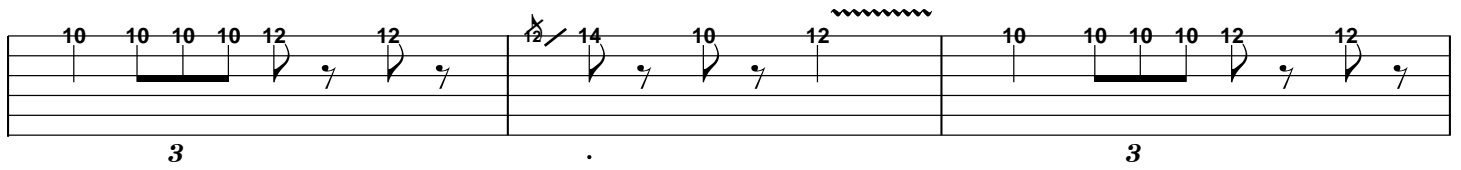
C⁵

B⁵

7	9	8	10	8	7	9	7	8	7	10	8	10	10
7	9	8	10	8	7	9	7	8	7	10	8	10	10

Theme 4

G⁵



Bridge 2

G G# A F# G F#

15 15 15 15 15 12 15 13 12 12 12 12 12 13 12 13 10 10 10 10 10 12 10 12 8 10 7 8 5 7 4 5

G G# A F# G F#

15 15 15 15 15 12 15 13 12 12 12 12 12 13 12 13 10 10 10 10 10 12 10 12 8 10 7 8 5 7 4 5

G G# A F# G F#

15 15 15 15 15 12 15 13 12 12 12 12 12 13 12 13 10 10 10 10 10 12 10 12 8 10 7 8 5 7 4 5

G G# A F# G F#

15 15 15 15 15 12 15 13 12 12 12 12 12 13 12 13 10 10 10 10 10 12 10 12 8 10 7 8 5 7 4 5

Theme 5

G⁵

10 10 10 10 12 12 12 14 10 12 10 10 10 12 12

3

A⁵

D⁵

B⁵

E⁵

Bfull R 12 14 12 10 12 8 10 8 7 10 8 7 10 10 12 10 13 12 10 12 12

7

C

D

E

A[#]

B

12 10 8 12 14 12 10 14 14 15 14 12 14 11 19 19

.

Bridge 3

B⁵

C⁵

B⁵

D[#]

E

F[#]

G

A

C

F[#]

B

B⁵

C⁵

B⁵

D^{#5}

E⁵

G^{#5}

A⁵

C⁵

D⁵

C⁵

B⁵

A⁵

Theme 6

G⁵

10 10 10 10 12 12 12 14 10 12 10 10 10 10 12 12

3

A⁵

D⁵

B⁵

E⁵

12 14 10 12 8 10 8 7 10 8 7 7 7 8 7 10 8 7 9 8

C

D

C

A[#]

B

7 9 8 10 8 7 9 7 8 7 5 10 10

Outro

G⁵

Fingerboard diagram for guitar solo "Outro" in G⁵. The diagram shows frets 5 through 15 across three systems. Chords A, D, B, and E are indicated under the first system. Chords C, F[#], D, F[#], G, F[#], and G are indicated under the second system. The notation includes various fret numbers, accidentals, and articulation marks like slurs and wavy lines.