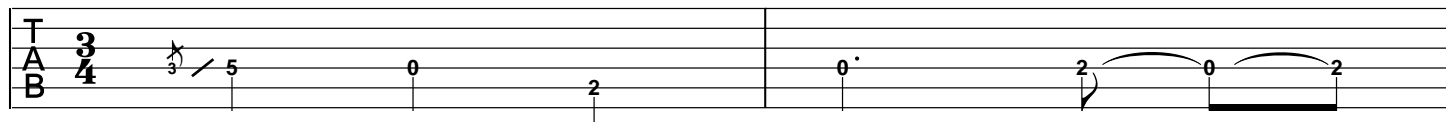


# Silent Night Country

Intro

G

D

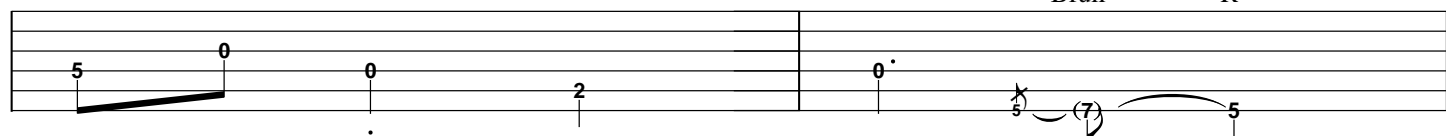


G

D

Bfull

R



Transcribed by Tapella

Theme 1

G

B1/2 R

Three measures of musical notation on a five-line staff. The first measure contains four notes: 0, 0, 2, and 0. The second measure contains a sequence of notes: 6, (7), (7'), and 6, with a wavy line above the first two notes. The third measure contains four notes: 0, 0, 2, and 0.

D

B1/2 R

Three measures of musical notation on a five-line staff. The first measure contains four notes: 6, 7, 7, and 7, with a wavy line above the first two notes. The second measure contains four notes: 2, 2, 7, and 7, with a wavy line above the first two notes. The third measure contains four notes: 4, (5), 4, and 2, with a wavy line above the first two notes.

G

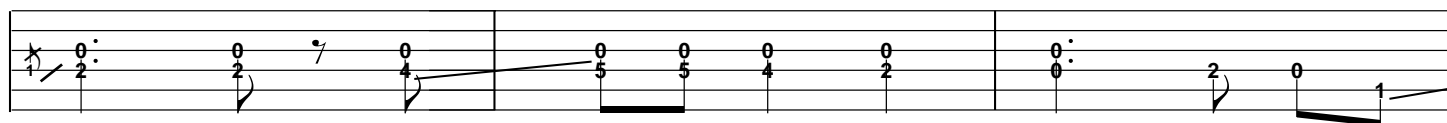
B1/2

Two measures of musical notation on a five-line staff. The first measure contains four notes: 5, 5, 7, and 7, with a wavy line above the first two notes. The second measure contains two notes: 4 and (5'), with a wavy line above the first note.

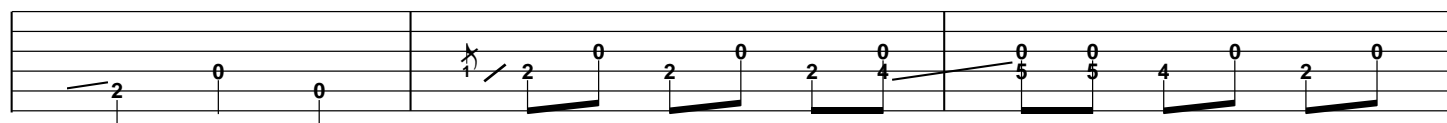
# Theme 1a

C

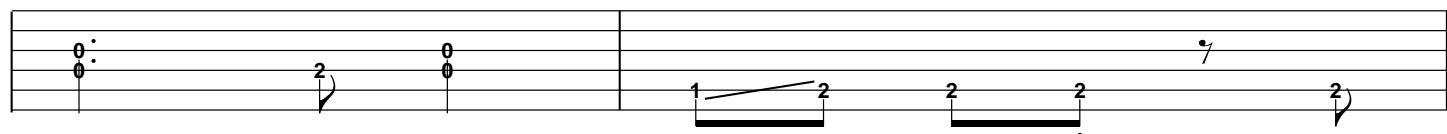
G



C



G



Theme 1b

D G

The first staff of music contains three measures. Measure 1 has two eighth notes with fingerings 2 and 0, followed by a quarter rest, then two eighth notes with fingerings 2 and 0, and a quarter note with fingering 4. Measure 2 has a half note with fingering 5, a half note with fingering 4, a quarter rest, and a quarter note with fingering 4. Measure 3 has a half note with fingering 0, a half note with fingering 0, and a quarter note with fingering 2. There are dots below the first two notes of measure 1.

D

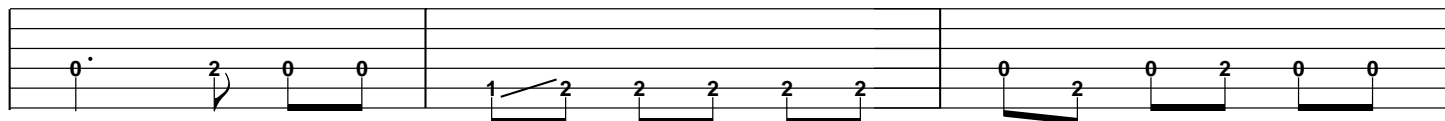
The second staff of music contains three measures. Measure 4 has a half note with fingering (4), a half note with fingering 2, a half note with fingering (4), and a half note with fingering 2. Measure 5 has a half note with fingering 0, a half note with fingering 2, a half note with fingering 0, and a half note with fingering 2. Measure 6 has a half note with fingering 0, a half note with fingering 5, a half note with fingering (7), and a half note with fingering 5. Above the staff, the labels "Bfull R Bfull R" are placed over measures 4 and 5, and "Bfull R" are placed over measure 6.

G

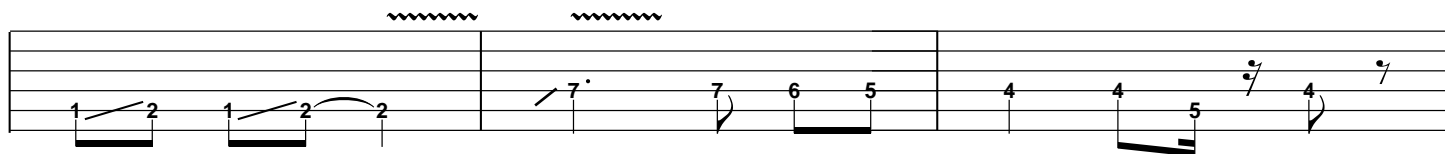
The third staff of music contains three measures. Measure 7 has a half note with fingering 3, a half note with fingering 3, a half note with fingering 3, and a half note with fingering 3. Measure 8 has a half note with fingering 2, a half note with fingering 0, a half note with fingering 3, a half note with fingering 0, and a half note with fingering 2. Measure 9 has a half note with fingering 0, a half note with fingering 2, a half note with fingering 0, and a half note with fingering 2. A wavy line is above the first measure.

# Theme 2

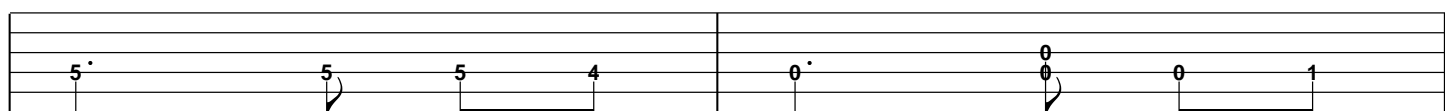
G



D



G



Theme 2a

C

G

C

B1/2R

G

let ring-----

# Theme 2b

D

G

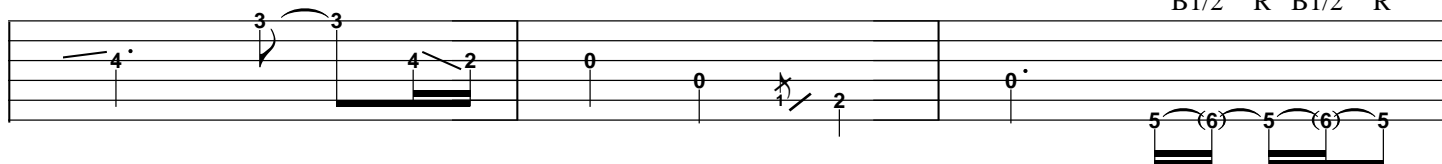
B1/2

R



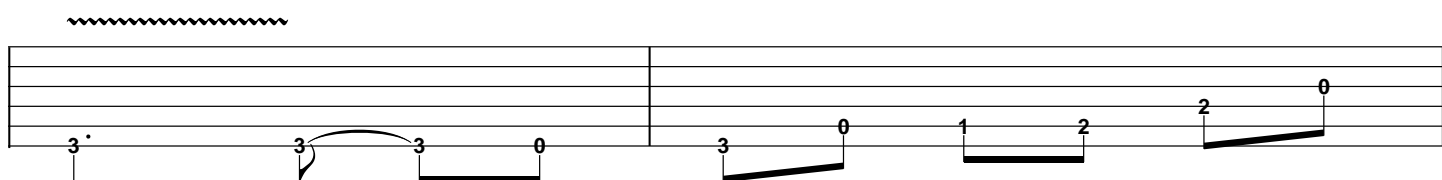
D

B1/2 R B1/2 R



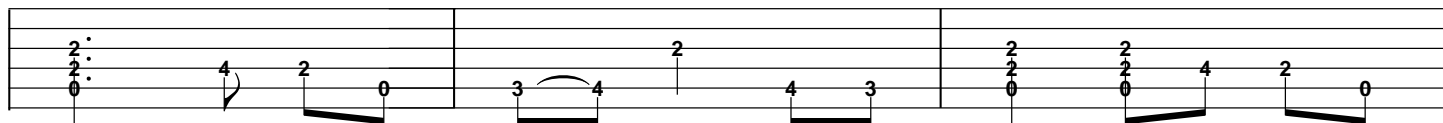
G

G#

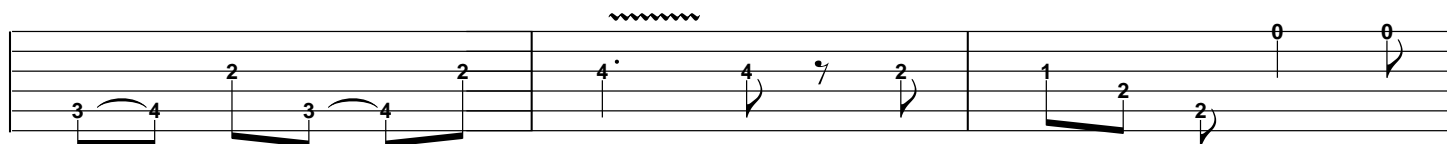


# Theme 3

A

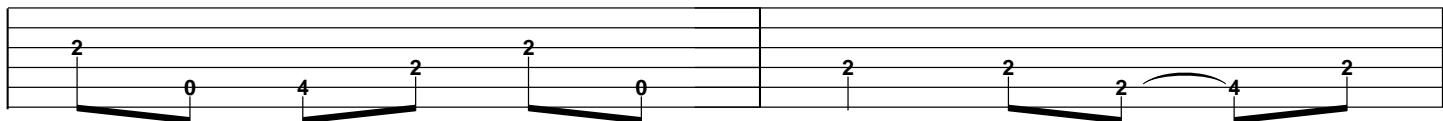


E



let ring-----|

A





# Theme 3a

D

A

~~~~~

B1/2 R

~~~~~

The first staff of music consists of three measures. Measure 1 contains a dotted quarter note on the 4th line, an eighth note on the 4th line, and a quarter note on the 6th line. Measure 2 contains an eighth note on the 7th line, a quarter note on the 6th line, a quarter note on the 7th line, a quarter note on the 6th line, and a quarter note on the 4th line. Measure 3 contains a dotted quarter note on the 2nd line, an eighth note on the 4th line, and a quarter note on the 2nd line.

D

P.M.

P.M.

The second staff of music consists of three measures. Measure 4 contains a quarter note on the 3rd line, a quarter note on the 4th line, and a quarter note on the 2nd line. Measure 5 contains a quarter note on the 2nd line, a quarter note on the 4th line, a quarter note on the 4th line, and a quarter note on the 6th line. Measure 6 contains a quarter note on the 7th line, a quarter note on the 6th line, a quarter note on the 4th line, and a quarter note on the 2nd line.

A

B1/4

~~~~~

B1/4

The third staff of music consists of three measures. Measure 7 contains a quarter note on the 2nd line, a quarter note on the 2nd line, and a quarter note on the 4th line. Measure 8 contains a quarter note on the 2nd line, a quarter note on the 3rd line, and a quarter note on the 4th line. Measure 9 contains a quarter note on the 2nd line, a quarter note on the 2nd line, and a quarter note on the 4th line.

Theme 3b

E

A

The first staff of music consists of three measures. Measure 1 contains a sequence of eighth notes with fingerings 7, 4, 7, 4, and 6. Measure 2 contains a sequence of eighth notes with fingerings 6, 7, 6, 4, and 7, with a wavy line above the staff. Measure 3 contains a sequence of eighth notes with fingerings 2, 2, 4, 2, and 4, with a wavy line above the staff.

E

E

The second staff of music consists of three measures. Measure 4 contains a sequence of eighth notes with fingerings 6, 5, 5, 5, and 4, with a wavy line above the staff. Measure 5 contains a sequence of eighth notes with fingerings 4, 6, 4, 2, 2, 4, 2, and 2, with a wavy line above the staff. Measure 6 contains a sequence of eighth notes with fingerings 4, 4, 2, 2, 4, and 4, with a wavy line above the staff.

A

The third staff of music consists of three measures. Measure 7 contains a sequence of eighth notes with fingerings 5, 5, 5, and 5, with a wavy line above the staff. Measure 8 contains a sequence of eighth notes with fingerings 4, 2, and 0, with a wavy line above the staff. Measure 9 contains a sequence of eighth notes with fingerings 2, 4, 2, and 4, with a wavy line above the staff.

Theme 4

A

Three measures of musical notation on a five-line staff. Measure 1: A whole note chord with notes 0 (open), 5 (fifth line), and 6 (first space). Measure 2: A half note chord with notes 5 (fifth line) and 6 (first space), followed by a quarter rest. Measure 3: A whole note chord with notes 5 (fifth line) and 6 (first space), followed by a quarter rest.

G#

A

D#

E

Three measures of musical notation on a five-line staff. Measure 4: A whole note chord with notes 4 (fourth line), 5 (fifth line), and 6 (first space). Measure 5: A half note chord with notes 11 (first space) and 12 (second line), followed by a quarter rest. Measure 6: A whole note chord with notes 11 (first space) and 12 (second line), followed by a quarter rest.

A

B1/2

Three measures of musical notation on a five-line staff. Measure 7: A whole note chord with notes 0 (open) and 14 (fourth space). Measure 8: A half note chord with notes 0 (open) and 14 (fourth space), followed by a quarter rest. Measure 9: A whole note chord with notes 0 (open) and 14 (fourth space), followed by a quarter rest.

Theme 4a

D

A

The first staff of music contains three measures. Measure 1 starts with a triplet of eighth notes (7, 7, 5) on a single line, followed by an eighth note (7) and a quarter note (9). Measure 2 contains a half note (10) and a half note (9), both with a slur underneath. Measure 3 contains a half note (5) and a half note (7), both with a slur underneath. The staff has a key signature of one sharp (F#) and a common time signature (C).

D

The second staff of music contains three measures. Measure 4 starts with a half note (6) and a half note (5), both with a slur underneath. Measure 5 contains a triplet of eighth notes (7, 7, 5) on a single line, followed by an eighth note (7) and a quarter note (9). Measure 6 contains a half note (10) and a half note (9), both with a slur underneath. The staff has a key signature of one sharp (F#) and a common time signature (C).

A

The third staff of music contains two measures. Measure 7 contains a half note (5) and a half note (6), both with a slur underneath. Measure 8 contains a half note (7) and a half note (5), both with a slur underneath. The staff has a key signature of one sharp (F#) and a common time signature (C).

Outro 1

E

B1/2 R Bfull A

Bfull Bfull E B1/2 R

A

B1/2

E A

Bfull R

## Outro 2

G# A

